

Onanon's *MagConnect®* | HV is performance engineered to be the most intuitive interconnect in the world. Its unique magnetic safety latch feature is ideal for medical applications, where time, precision, and quality are most critical. *MagConnect®* | HV has been tested to be able to withstand electrically demanding medical procedures, such as IVL and PFA. *MagConnect®* has been used in applications with low & high voltages, sensitive EMI, shock & vibration environments, and integration of intelligent electronics.

- **2 to 15 pin capacity**
- **Intuitive and self-mating**
- **Magnetic safety de-latching**
- **Customizable for reusable or single use applications**
- **Easily add components such as EEPROMs, resistors and capacitors**
- **EMI/RFI Safe**
- **Low (<12v) & High (>7000v) Voltage Safe**
- **Rugged use in outdoor wearables**
- **VF/HF/RF Safe**



Specifications

Mechanical

Mating Type: Magnetic
Mating Cycles: 10k Min
Mating Forces:
 Insertion: Magnetic
 Removal: Up to 3.3 lbf

Electrical

Operating Voltage:
 7kVDC for HV Pins
 200VDC for LV Pins
Operating Current: 3A

Environmental

Sterilizable: Gamma, EtO
Chemical Resistance: Common cleaning solvents
Finger Safety: IEC 60601-1
Storage & Operating Temp:
 0-150°C

Compatibility

Contacts: 5 HV Pins; 10 LV Pins
Plug & Panel Mount
Accepted Wire Gauges:
 26-50 AWG for HV Pins
 26-50AWG for LV Pins
Plug Cable Jacket OD: 0.260" Max
Contact Termination: Solder



Self-Mating

Intuitive tear drop and magnetic interlock ensures a robust, safe, and reliable connection



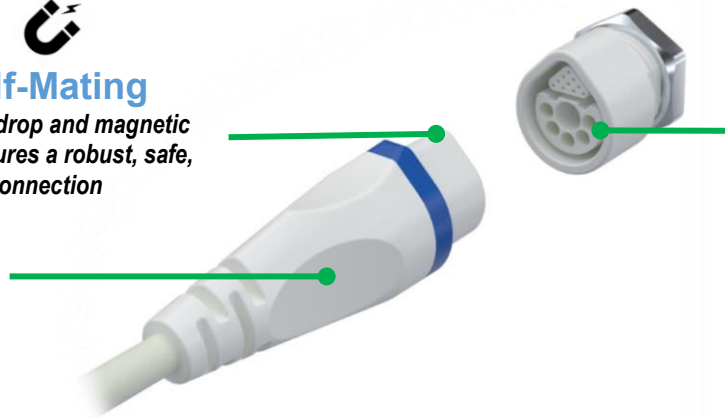
Sterilizable

Chemical-resistant materials are easy to clean and withstand repeated wipe-downs using common hospital disinfectants



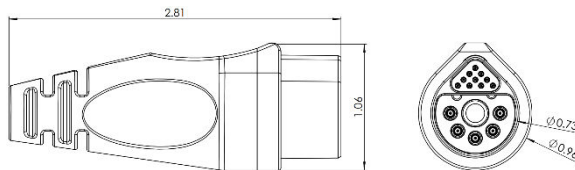
High Voltage Capability

Adequate creepage and clearance distances to ensure safe, high voltage procedures

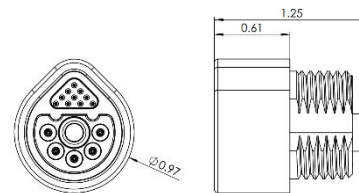


Dimensions

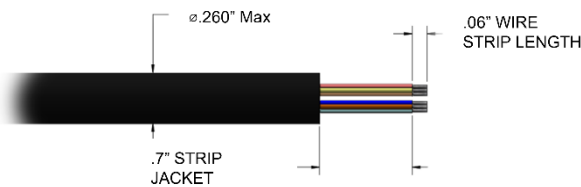
Plug



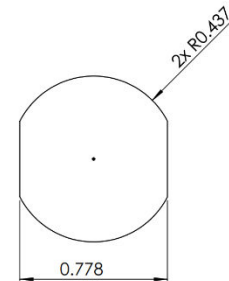
Panel Mount Receptacle



Recommended Cable Specifications



Recommended Panel Cutout



*Units are in inches
Contact Sales for unspecified dimensions*

Materials & Assembly

Plug Assembly

Plug Housing: Thermoplastic Polyester
Retaining Cap: Thermoplastic Polyester
Pins: Gold Plated Brass Alloy
Magnet: Nickel Plated Neodymium
Slip-On Boot: Thermoplastic Polyurethane

Required Assembly: Assemble connector body after terminating wires

Panel Mount Receptacle

Insulator Insert: Thermoplastic Polyester
Metal Shell: Chromium Plated Brass Alloy
Pins: Gold Plated Brass Alloy
Magnet: Nickel Plated Neodymium

Required Assembly: Solder a PCB or flex assembly



Plug

282-A002-XXXX-X

NO. OF LV CONTACTS

05, 10

NO. OF HV CONTACTS

2, 5

CONTACT TYPE

S – SOLDER CUP
R – ROBOSOLDER®

RECEPTACLE COLOR

B – BLACK
G – GREY
R – RED
Y – YELLOW
N – GREEN
W – WHITE
U – BLUE

Contact Sales for Custom Configurations



Panel Mount Receptacle

282-A001-XXXX-X-XXX-X

NO. OF LV CONTACTS

05, 10

NO. OF HV CONTACTS

2, 5

CONTACT TYPE

S – SOLDER CUP
R – ROBOSOLDER®

PLUG & BOOT COLOR

B – BLACK N – GREEN
G – GREY W – WHITE
R – RED U – BLUE
Y – YELLOW

BOOT ID

270 = \varnothing 0.270" ; 103 = \varnothing 0.130"

INDICATOR COLOR

B – BLACK N – GREEN
G – GREY W – WHITE
R – RED U – BLUE
Y – YELLOW

Contact Sales for Custom Configurations

Custom Options Available:

Reach out to our sales team about laser-engraved logos, personalized color options, high volume orders, and end-to-end custom cable assemblies, including our integrated SmartConnect™ capabilities.